

Water

Actions included in the 2019/20 Operational Plan support the following objectives included in the Community Strategic Plan 2030:

- NE1 We use our resources wisely

Changing how we do things

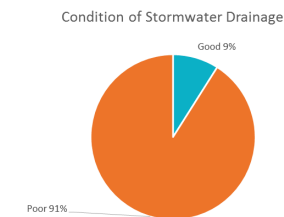
Council's water loss management system has allowed council to better account for all water produced. Council is in the process of installing water meters on all council facilities which will result in a decrease in unaccounted water for Council.

Council is also rolling out new metered standpipes across the Local Government Area to allow easier access for all residents to bulk treated potable water.

Plans & Strategies

- Strategic Asset Management Plan
- Water and Sewer Strategic Business Plan
- Integrated Water Cycle Management Plan
- Developer Servicing Plans
- Best Practice Guidelines for Water & Sewer
- Drought Management Plan
- Drinking Water Quality Management Plan

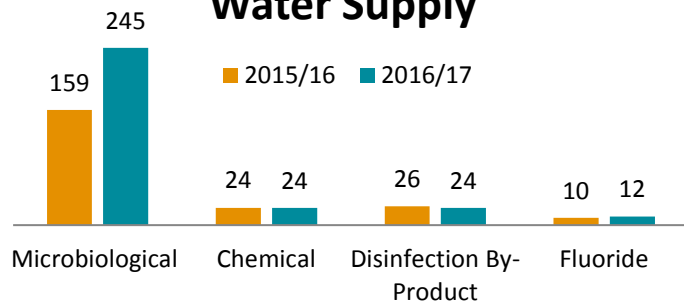
Condition Rating



Council owns and maintains a stormwater network including 63km pipes, 913m open channels and 1,936 pits. The Council currently spends approximately \$100,000 per annum on maintenance.

The majority of our stormwater assets are considered to be in poor condition with only 9% rated as good condition. Additional maintenance and renewal work needs to be undertaken to improve the condition of stormwater drainage assets.

Routine Samples of the Reticulated Drinking Water Supply



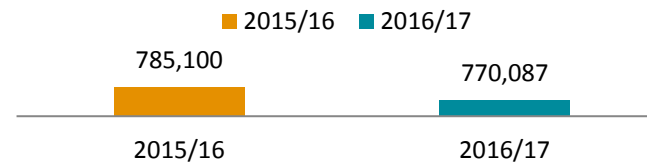
The drinking water monitoring program enables regional rural water utilities to monitor their water in line with the Australian Drinking Water Guidelines 2004. Representative samples are taken by local water utilities and provided to NSW Health for analysis and recording to ensure water provided to consumers complies with the Guidelines.

Blue Green Algae Sampling in Partnership with Energy Australia



The increase shown in 2015/16 represents a prolonged period of hot weather combined with very little rainfall, which is conducive to increased chances of Blue Green Algae outbreaks. Therefore increased testing was undertaken during this period.

Water Purchased from Fish River Water Supply (kL)



The Areas of Wallerawang, Portland, Cullen Bullen, Blackmans Flat, Pipers Flat, Lidsdale, Rydal and Glen Davis are supplied with water purchased from the Fish River Water Supply. In recent years, the amount of water purchased has decreased as Council is able to supplement the supply to the villages when needed thus reducing demand on the Fish River system.

NE1 – WE USE OUR RESOURCES WISELY

DELIVERY PLAN (2017-2021)	OPERATIONAL PLAN (2019-2020)			
Delivery Program Action (4 years)	Action	Performance Measure	Target	Responsible Department
NE1.2 Implement total water cycle management practices.	NE1.2.1 Provide a secure and reliable water reticulation system to residents of the Lithgow LGA	Undertake a Water Loss Management Program and implementation of its actions to achieve a reduction in Unaccounted for Water to less than 25%.	25% reduction achieved	Water and Wastewater
	NE1.2.2 Provide stormwater infrastructure to allow for sustainable growth and development of the area and alleviate flooding.	Commence actioning feasibility studies relating to the increase of capacity of stormwater infrastructure between Main Street and Farmers Creek and Alison Close and Pipers Flat Road to increase stormwater capacity.	100% complete	Infrastructure Services
	NE1.2.3 Protect the catchment around Farmers Creek Dam.	Provide drinking water to residents with the Farmers Creek Reticulated Supply System in accordance with the Australian Drinking Water Guidelines.	100% compliance	Water and Wastewater
	NE1.2.4 Conduct routine monitoring of Council's reticulated drinking water supplies.	Percentage of water samples undertaken as part of the NSW Health Drinking Water Monitoring Program	100% per annum	Environment
	NE1.2.5 Undertake routine monitoring of Farmers Creek, Lake Lyell, Pipers Flat Creek and Lake Wallace for blue green algae.	Samples taken in partnership with Energy Australia upon trigger of Red Alert.	Minimum of 1 per month under red alert	Environment
	NE1.2.6 Purchase water from State Water to supply Cullen Bullen, Glen Davis, Lidsdale, Portland, Wallerawang and Marrangaroo.	Water purchased from Fish River Water Supply.	Total Kilolitres per quarter	

WATER SERVICES PROGRAM INCOME AND EXPENDITURE 2019/2020

Project	Project Costs \$	Funded from Grants \$	Funded from Special Rate Variation \$	Funded from Net Revenue \$
Stormwater Drainage Program	1,00,000		(100,000)	
Alison Close, Wallerawang Drainage Improvements As a result of recent development, the drainage at Alison Close, Wallerawang is not sufficient. This project involves the clearing of natural drainage lines and the installation of pipes underneath a nearby property to carry the stormwater that is currently overland flow to the drainage that runs alongside Pipers Flat Road.	75,000		75,000	
SRV - General Asset Drainage Maintenance	25,000		25,000	
Urban Drainage Improvements				
Repair of existing and installation of new (where required) urban drainage infrastructure	375,000			(325,000)
Main Street, Lithgow In 2018/19, Council allocated funds to the improvement of stormwater infrastructure in the vicinity of Laurence Street to improve localised flooding. This funding was enough to cover feasibility and design. This project will affect the proposed design for construction in 2019/20.	162,500			(162,500)
West Ridge Road, Wallerawang Drainage Improvements Facilitate the installation of improved stormwater infrastructure in this vicinity to ensure roadside stormwater does not interfere with residential properties.	50,000			
Kerb and gutter improvements	162,500			(162,500)

Special Rate Variation

Council has submitted an application to IPART for a Special Rate Variation and will be informed of the outcome of the application in May 2019. If approved, works identified to be funded from the Special Rate Variation in the following programs will be included in the 2019/20 works program: